

TEST CONDITIONS

Test Date	10/18/2021
Test Conductor	Anton Francois
Boat Weight as Tested (lbs)	3050
Air Temperature (degrees F)	73
Elevation (ft)	0
Sea State	Calm
Wind Velocity range (mph)	5
Fresh/Salt Water	Saltwater
Fuel Level at Testing (gal)	10

ENGINE SPECIFICATIONS

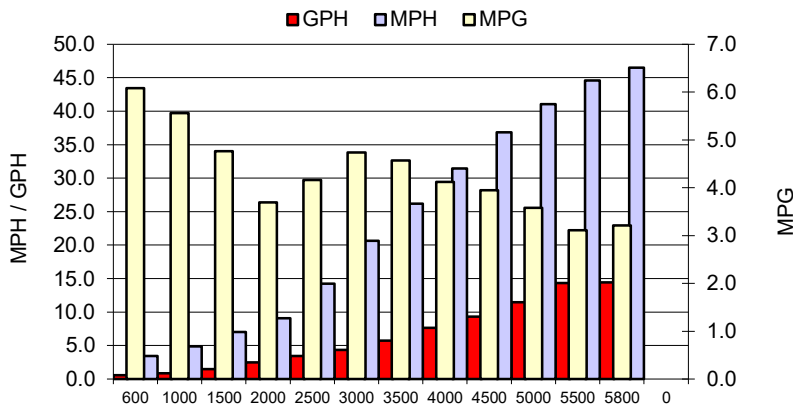
Number of Engines	1
Engine	150 FourStroke
Horsepower	150
Cylinders	4
Drive or gear model and ratio	Standard 1.98
Mounting Bolt Hole	2
Engine Height (in)	1.5
Engine Setback (in)	8
Engine Length (in)	25

PERFORMANCE SUMMARY

Top Speed (mph @ rpm)	46.5	5805
Acceleration 0 - 20 mph (seconds)	3.83	
Acceleration 0 - 30 mph (seconds)	6.53	

PROPELLER SPECIFICATIONS

Mercury Name	Spitfire
Material	Aluminum
Pitch	19
Number of Blades	4

PERFORMANCE CURVE

BOAT SPECIFICATIONS

Region/s sold	
Manufacturer	zodiac
Website	
Boat Model	NZO680
Boat Type	Inshore Saltwater
Material	Material
Length (ft)	22.4
Beam (ft)	8.4
Max hp Capacity	0
Fuel Tank Capacity (gal)	56
Steering Type	Hydraulic Steering
Dry Boat Weight (lbs)	2094

PERFORMANCE DATA

RPM	SPEED	FUEL CONSUMPTION	FUEL CONSUMPTION	RANGE
RANGE	MPH	GPH	MPG	MILES
600	3.4	0.6	6.1	340
1000	4.9	0.9	5.6	311
1500	7.0	1.5	4.8	267
2000	9.1	2.5	3.7	207
2500	14.2	3.4	4.2	233
3000	20.6	4.4	4.7	265
3500	26.2	5.7	4.6	256
4000	31.4	7.6	4.1	231
4500	36.8	9.3	3.9	221
5000	41.0	11.5	3.6	201
5500	44.6	14.3	3.1	174
5800	46.5	14.4	3.2	180
0	0.0	0.0	0.0	0
0	0.0	0.0	0.0	0

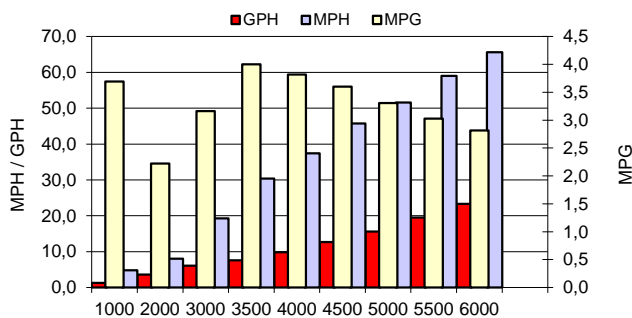
TEST CONDITIONS

Test Date	08/09/2020
Test Conductor	AF/AB +1
Boat Weight as Tested (lbs)	3 454
Air Temperature (degrees F)	77
Elevation (ft)	Sea Level
Sea State (calm / smooth / slight / moderate)	Smooth
Wind Velocity range (mph)	5 MPH
Fresh/Salt Water	Salt
Fuel Level at Testing (gal)	25

PERFORMANCE SUMMARY

Top Speed (mph @ rpm)	<u>65.6 @ 6000</u>
Acceleration 0 - 20 mph (seconds)	3,9
Acceleration 0 - 30 mph (seconds)	6,1
Best Fuel Economy (mpg @ rpm)	<u>4 mpg @ 3500rpm</u>

PERFORMANCE CURVE



PERFORMANCE DATA

RPM	SPEED	FUEL CONSUMPTION	FUEL CONSUMPTION	RANGE	SOUND
RANGE	MPH	GPH	MPG	MILES	dB-A
1000	4,8	1,3	3,7	206,8	
2000	8,0	3,6	2,2	124,4	
3000	19,3	6,1	3,2	177,2	
3500	30,4	7,6	4,0	224,0	
4000	37,4	9,8	3,8	213,7	
4500	45,7	12,7	3,6	201,5	
5000	51,6	15,6	3,3	185,2	
5500	59,0	19,5	3,0	169,4	
6000	65,6	23,3	2,8	157,7	

ENGINE SPECIFICATIONS

Number of Engines	1
Engine	300 Verado
Horsepower	300
Cylinders	V8
Drive or gear model and ratio	1.85:1

BOAT SPECIFICATIONS

Region/s sold	USA
Manufacturer	Zodiac
Website	zodiac-nautic.com
Boat Model	NZO 680
Boat Type	RIB
Material	Fiberglass Inflatable
Length (ft)	22' 4"
Beam (ft)	8' 3"
Max hp Capacity	300
Fuel Tank Capacity (gal)	56
Steering Type	Mercury power steering
Dry Boat Weight (lbs)	2094
Mounting Hole	3

PROPELLER SPECIFICATIONS

Part Number	
Part Number	
Part Number	
Part Number	
Mercury Name	Enertia
Material	Stainless Steel
Diameter/Pitch	13.5 x 22"P
Number of Blades	3

Comments

Build required engine bracket to ensure proper clearance from swim platforms. Bracket used was Bobs Machine, SKU: 100-404000