

A Factual Report from Mercury Marine

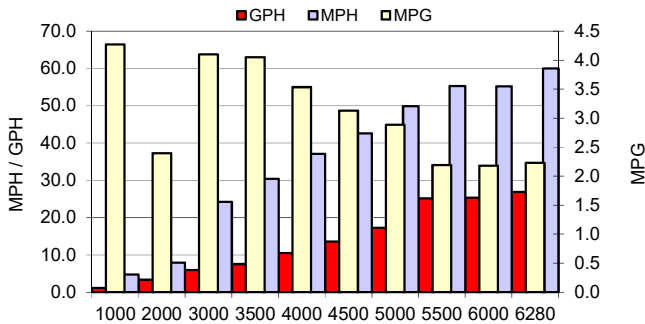
## TEST CONDITIONS

Test Date	2/20/2017
Test Conductor	Joe Himmelspach
Boat Weight as Tested (lbs)	2,700
Air Temperature (degrees F)	80F
Elevation (ft)	sea level
Sea State (calm / smooth / slight / moderate)	Moderate 12"-18"
Wind Velocity range (mph)	15mph
Fresh/Salt Water	salt
Fuel Level at Testing (gal)	45

## PERFORMANCE SUMMARY

Top Speed (mph @ rpm)	<a href="#">60.0mph @ 6280rpm</a>
Acceleration 0 - 20 mph (seconds)	2.1
Acceleration 0 - 30 mph (seconds)	5.1
Best Fuel Economy (mpg @ rpm)	<a href="#">4.1mpg @ 3000rpm</a>

## PERFORMANCE CURVE



## PERFORMANCE DATA

RPM	SPEED	FUEL CONSUMPTION	FUEL CONSUMPTION	RANGE	SOUND
RANGE	MPH	GPH	MPG	MILES	dB-A
1000	4.7	1.1	4.3	230.7	
2000	7.9	3.3	2.4	129.3	
3000	24.2	5.9	4.1	221.5	
3500	30.4	7.5	4.1	218.9	
4000	37.1	10.5	3.5	190.8	
4500	42.6	13.6	3.1	169.1	
5000	49.9	17.3	2.9	155.8	
5500	55.3	25.2	2.2	118.4	
6000	55.2	25.3	2.2	117.8	
6280	60.0	26.9	2.2	120.4	

## ENGINE SPECIFICATIONS

Number of Engines	1
Engine	250 Verado
Horsepower	250
Cylinders	6
Drive or gear model and ratio	1.85:1

## BOAT SPECIFICATIONS

Region/s sold	<b>USA</b>
Manufacturer	Zodiac
Website	zodiac-nausic.com
Boat Model	Pro 7
Boat Type	RIB
Material	Fiberglass Inflatable
Length (ft)	22'1"
Beam (ft)	8'3"
Max hp Capacity	250
Fuel Tank Capacity (gal)	54
Steering Type	Hydraulic Power Assist
Dry Boat Weight (lbs)	2000
Mounting Hole	4

## PROPELLER SPECIFICATIONS

Part Number	48-899002A46 RH
Part Number	
Part Number	
Part Number	
Mercury Name	Enertia
Material	Stainless Steel
Diameter/Pitch	13.8" / 21"P
Number of Blades	3

## Comments