

BOAT HOUSE BULLETIN®



A Factual Report from Mercury Marine

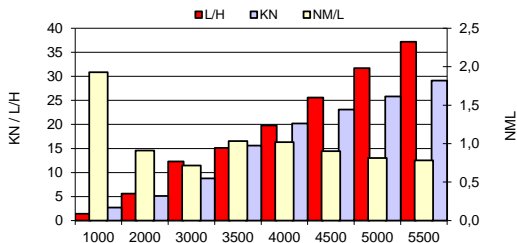
TEST CONDITIONS

Test Date	18/01/2023
Test Conductor	S.SCHUSTER
Boat Weight as Tested (kg)	1225
Air Temperature (degrees C)	1°
Elevation (m)	0,5
Sea State (calm / smooth / slight / moderate)	Calm
Wind Velocity range (kn)	5kn
Fresh/Salt Water	Salt
Fuel Level at Testing (l)	75

PERFORMANCE SUMMARY

Top Speed (kn @ rpm)	<u>35.6 @ 5900</u>
Acceleration 0 - 20 kn (seconds)	8,7
Acceleration 0 - 30 kn (seconds)	15,9
Best Fuel Economy (nm/l @ rpm)	1nm/l @ 4000

PERFORMANCE CURVE



PERFORMANCE DATA

RPM	SPEED	FUEL CONSUMPTION	FUEL CONSUMPTION	RANGE	SOUND
RANGE	KN	L/H	NM/L	NM	dB-A
1000	2,7	1,4	1,9		
2000	5,1	5,6	0,9		
3000	8,8	12,3	0,7		
3500	15,6	15,1	1,0		
4000	20,2	19,8	1,0		
4500	23,1	25,6	0,9		
5000	25,8	31,7	0,8		
5500	29,1	37,2	0,8		
5850	33,2	40,6	0,8		
Top RPM	35,6	41,1	0,9		

ENGINE SPECIFICATIONS

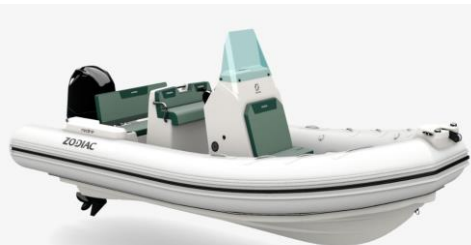
Number of Engines	1
Engine	L4/EFI
Horsepower	115 CV
Cylinders	2100cm3
Drive or gear model and ratio	2,07

BOAT SPECIFICATIONS

Region/s sold	France
Manufacturer	Znautique
Website	www.zodiac-nautic.com
Boat Model	MEDLINE
Boat Type	Inflatable - Rigid Hull (RIB)
Material	POLYESTER
Length (m)	5,8
Beam (m)	2,54
Max hp Capacity	150cv
Fuel Tank Capacity (l)	100
Steering Type	Hydraulique
Dry Boat Weight (kg)	673
Mounting Bolt Hole (outboard)	1

PROPELLER SPECIFICATIONS

Part Number	854360A45
Part Number	
Part Number	
Part Number	
Mercury Name	BLACK MAX
Material	ALU
Diameter/Pitch	13.3X16
Number of Blades	3



MERCURY MARINE PO BOX 1939 FOND DU LAC, WISCONSIN 54936-1939

©2015 Mercury Marine, All Rights Reserved. Results on individual boats may vary depending on many factors.

800-MERCURY MERCURYMARINE.COM

Boatbuilder authorize Mercury to publish the BHB on Mercury WEB site: N