



# BOAT HOUSE BULLETIN®



A Factual Report from Mercury Marine

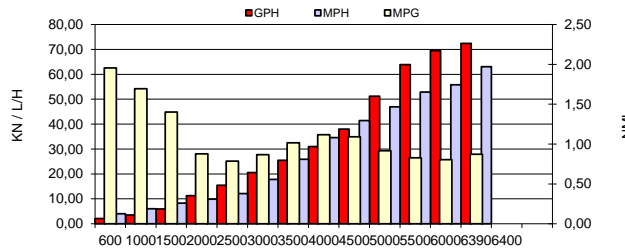
## TEST CONDITIONS

Test Date	20/02/2024
Test Conductor	S.SCHUSTER
Boat Weight as Tested (kg)	6460
Air Temperature (degrees C)	15
Elevation (m)	0
Sea State (calm / smooth / slight / moderate)	Calm
Wind Velocity range (kn)	2
Fresh/Salt Water	Salt water
Fuel Level at Testing (l)	350

## PERFORMANCE SUMMARY

Top Speed (kn @ rpm)	58,6	6400
0 - 20 kn	7,65	
0 - 30 kn	11,30	
Best Fuel Economy (nm/l @ rpm)		

## PERFORMANCE CURVE



## PERFORMANCE DATA

RPM	SPEED	FUEL CONSUMPTION	FUEL CONSUMPTION	RANGE	SOUND
RANGE	MPH	GPH	MPG	Miles	dB-A
600	4,05	2,07	1,95	0	
1000	6,00	3,54	1,69	0	
1500	8,28	5,90	1,40	0	
2000	9,88	11,25	0,88	0	
2500	12,16	15,48	0,79	0	
3000	17,81	20,58	0,87	0	
3500	25,87	25,44	1,02	0	
4000	34,60	31,00	1,12	0	
4500	41,45	38,00	1,09	0	
5000	46,94	51,21	0,92	0	
5500	52,87	63,93	0,83	0	
6000	55,79	69,48	0,80	0	
6390	63,09	72,38	0,87	0	
6400	#DIV/0!	0,00	#DIV/0!	#DIV/0!	
	#DIV/0!	0,00	#DIV/0!	#DIV/0!	

## ENGINE SPECIFICATIONS

Number of Engines	2
Engine	V10
Horsepower	400
Cylinders	5,7
Drive or gear model and ratio	Not applicable
Engine Length (in)	CXL-XL

## BOAT SPECIFICATIONS

Region/s sold	
Manufacturer	Z Nautic
Website	www.zodiac-nautic.com
Boat Model	XCC10
Boat Type	Rib
Material	Fiberglass-infused
Length (m)	9,99
Beam (m)	3,80
Max hp Capacity	800
Fuel Tank Capacity (l)	0
Steering Type	0
Dry Boat Weight (kg)	5300
Mounting Bolt Hole (outboard)	4

## PROPELLER SPECIFICATIONS

Part Number	8M0182951LH
Part Number	8M0182952RH
Part Number	
Part Number	
Mercury Name	rev x
Material	Steel
Diameter/Pitch	23
Number of Blades	4

MERCURY MARINE PO BOX 1939 FOND DU LAC, WISCONSIN 54936-1939

©2015 Mercury Marine, All Rights Reserved. Results on individual boats may vary depending on many factors.

800-MERCURY MERCURYMARINE.COM

Boatbuilder authorize Mercury to publish the BHB on Mercury WEB site:

NO